



Available Now!
\$294,990
From \$2,297.87*/month

1848 S Canyon Lake Ct
Stewart Coves
Homesite 75

Est. Completion Date: Available now!



2,279

TOTAL SQUARE FEET

1,863

LIVING SQUARE FEET

4

BEDROOMS

2.5

BATHS

2

CAR GARAGE

2.0

STORIES

Call or Text 956-275-8069 or visit our Sales Office Monday - Saturday: 9:30am to 6:30pm Sunday: 12pm to 6pm for more info!

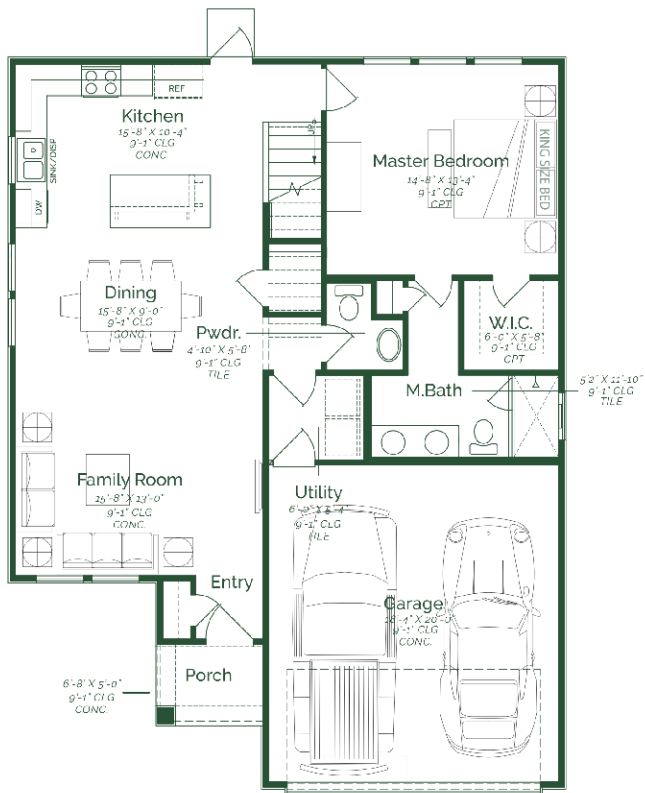
Welcome to this stylish two-story home that effortlessly combines modern comfort with classic elegance. Upon entering the home, the open-concept living space seamlessly connects the family room, dining, and kitchen. The kitchen is a chef's delight, offering painted maple wood cabinets, upgraded quartz countertops, and luxury 5-Piece GE stainless steel appliances. The primary suite is thoughtfully placed at the back of the home for privacy. Conveniently tucked away on the main floor is a powder room, for both residents and guests. Upstairs, you'll discover three well-appointed bedrooms and two full bathrooms.

- Maple Wood Cabinets
- Upgraded Quartz Countertops
- Waterproof Flooring throughout home
- Upgraded 5-Piece GE Stainless Steel Appliances- Electric

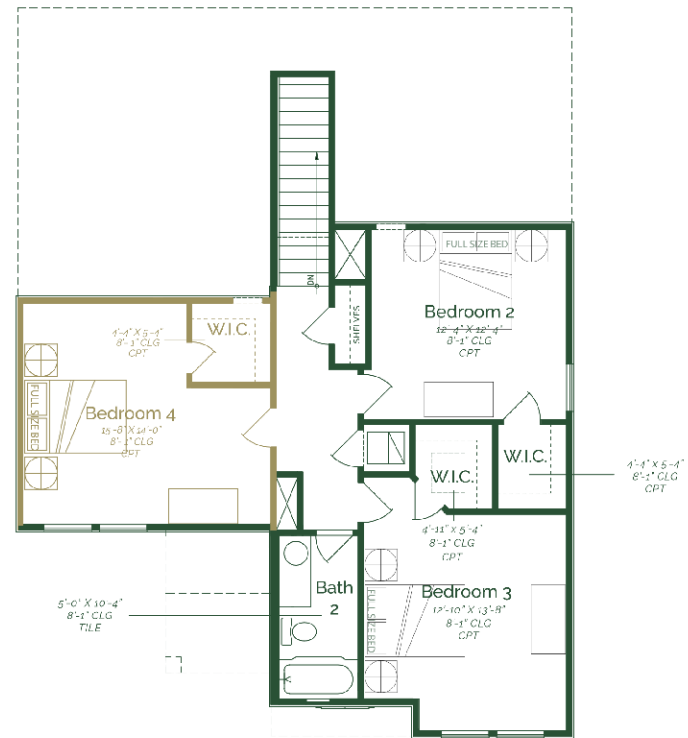
The information provided in this document regarding available quick move-in homes at Esperanza Homes is intended for informational purposes only. While we strive to present accurate and up-to-date information, all details—including but not limited to pricing, availability, home features, and community amenities—are not guaranteed and are subject to change without prior notice. Dimensions and floor plans are approximate and may differ from the actual homes. Incentives and promotional offers are valid only when financing through Stonewood Home Lending and are subject to specific terms and conditions and may be limited to select homes and communities. For comprehensive terms, conditions, and further information regarding our homes and offerings, please consult with an Esperanza Homes sales consultant or visit esperanzahomes.com.



Acuna II



FIRST FLOOR



SECOND FLOOR