



Available Now!
\$279,990
 From \$2,312.64*/month

923 Lost Mine Trail
 Sendero at Bentsen Palm
 Homesite 26

Est. Completion Date: Available MAY/JUN 2026



2,300	1,693	3	2.5	2	2.0
TOTAL SQUARE FEET	LIVING SQUARE FEET	BEDROOMS	BATHS	CAR GARAGE	STORIES

Call or Text 956-275-8069 or visit our Sales Office Monday - Saturday: 9:30am to 6:30pm
 Sunday: 12pm to 6 pm for more info!

Welcome to this beautifully designed home featuring three spacious bedrooms, two full bathrooms, a powder room, and an open-concept layout. The kitchen is equipped with Maple Wood stained cabinets, upgraded Arctic White Quartz countertops, a beautiful farmhouse sink, and GE stainless steel appliances. The primary bedroom features upgraded bay windows, an ensuite bathroom with a step-in shower, and a spacious walk-in closet. Upstairs, you'll find a versatile gameroom, two bedrooms, and a shared full bath. Outside, relax or entertain guests under a covered patio.

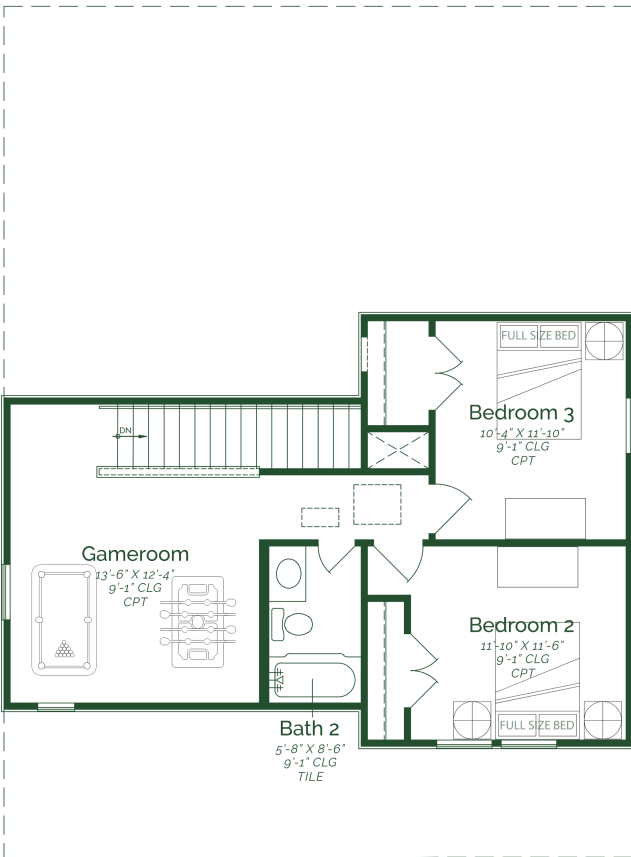
- Upgraded Covered Patio
- Upgraded Quartz Countertops
- Upstairs Game Room
- GE 3-Piece Stainless Steel Appliances- Gas

*Photos do not represent final production of home.

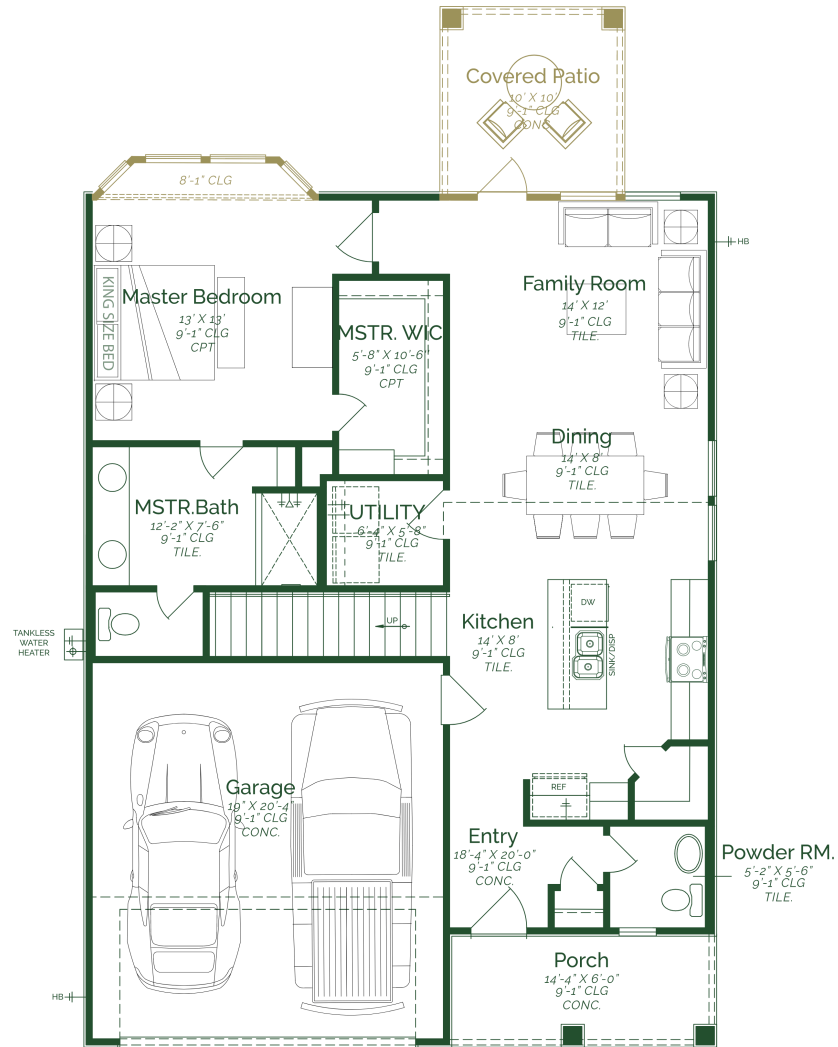
The information provided in this document regarding available quick move-in homes at Esperanza Homes is intended for informational purposes only. While we strive to present accurate and up-to-date information, all details—including but not limited to pricing, availability, home features, and community amenities—are not guaranteed and are subject to change without prior notice. Dimensions and floor plans are approximate and may differ from the actual homes. Incentives and promotional offers are valid only when financing through Stonewood Home Lending and are subject to specific terms and conditions and may be limited to select homes and communities. For comprehensive terms, conditions, and further information regarding our homes and offerings, please consult with an Esperanza Homes sales consultant or visit esperanzahomes.com.



Jasmine



SECOND FLOOR



FIRST FLOOR