



Available Now!

\$281,990

From \$2,554.15*/month

908 S. Templo Dorado

Sendero at Bentsen Palm

Homesite 100

Est. Completion Date: Available OCT/NOV 2025



2,292

TOTAL SQUARE FEET

1,784

LIVING SQUARE FEET

3

BEDROOMS

2.5

BATHS

2

CAR GARAGE

2.0

STORIES

Call or Text 956-275-8069 or visit our Sales Office Monday - Saturday: 9:30am to 6:30pm
Sunday: 12pm to 6 pm for more info!

Welcome to this beautifully designed home featuring three spacious bedrooms and two full bathrooms, open-concept living area offers a seamless flow from the living room to the kitchen and dining space, ideal for both everyday living and entertaining. The kitchen is equipped with upgraded painted pure white maple wood cabinets, quartz countertops, and GE stainless steel appliances. Upstairs, you'll find a spacious gameroom, two bedrooms, and a shared full bath. Outside, relax or entertain guests under a covered patio.

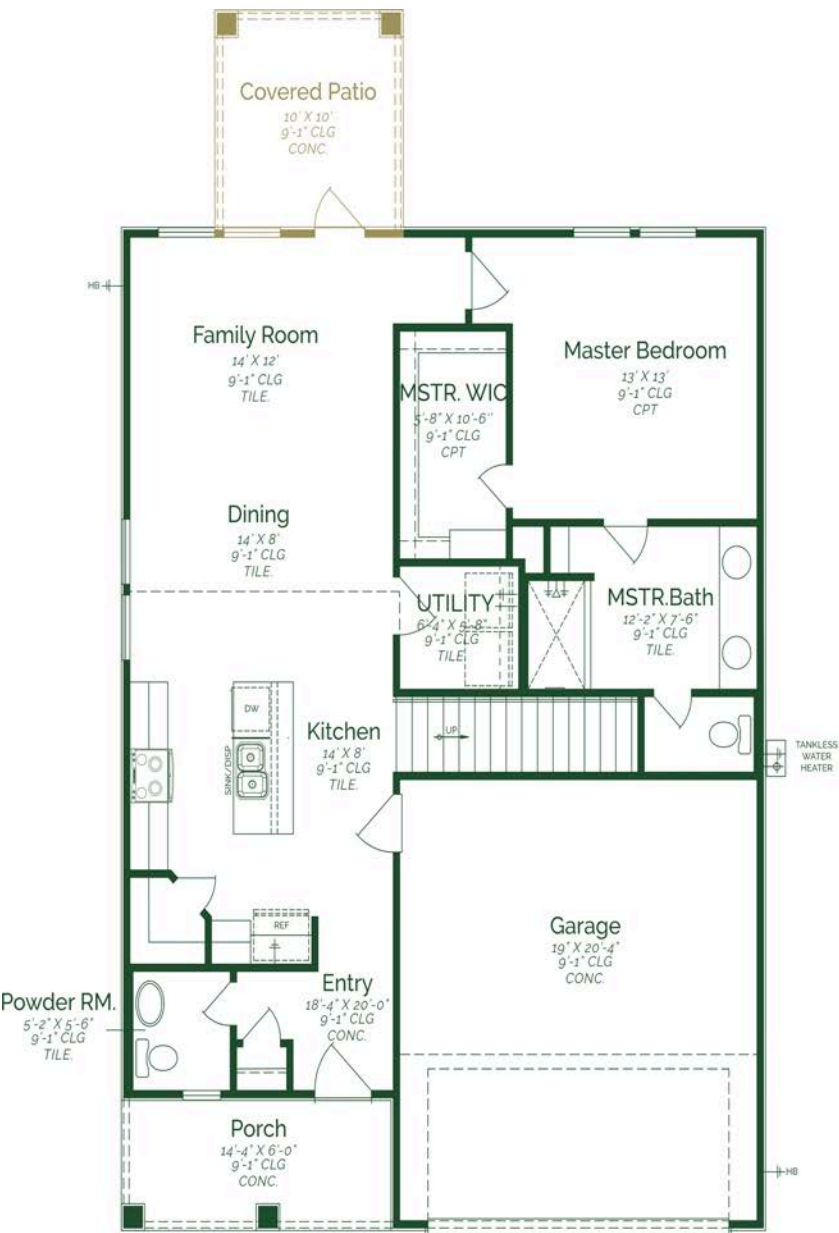
- Covered Patio
- Quartz Countertops
- Upstairs Game Room
- GE stainless steel appliances- Gas

*Photos do not represent the final production of the home

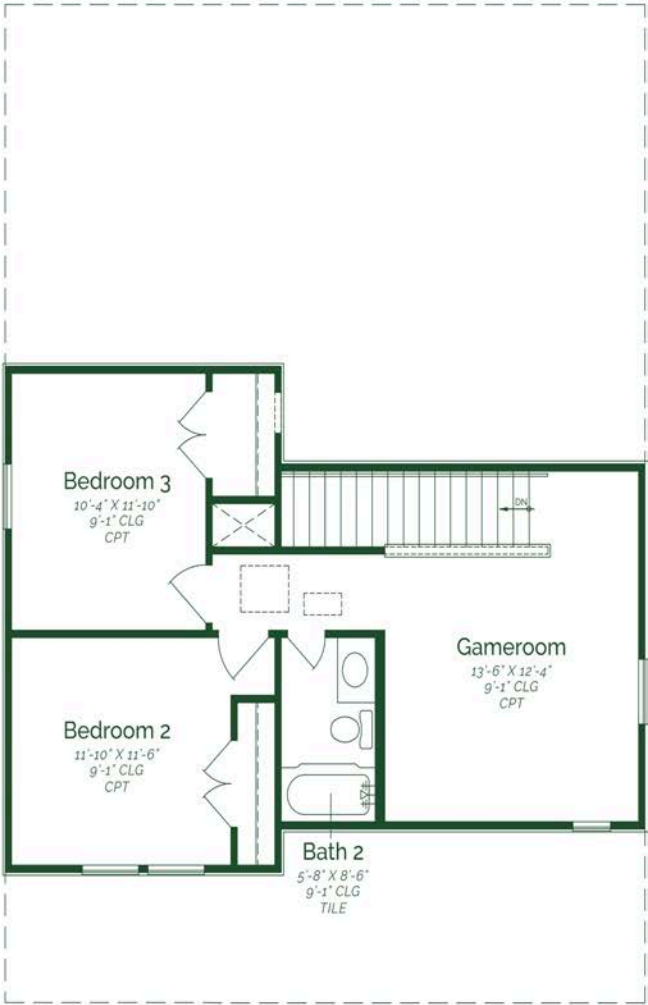
The information provided in this document regarding available quick move-in homes at Esperanza Homes is intended for informational purposes only. While we strive to present accurate and up-to-date information, all details—including but not limited to pricing, availability, home features, and community amenities—are not guaranteed and are subject to change without prior notice. Dimensions and floor plans are approximate and may differ from the actual homes. Incentives and promotional offers are valid only when financing through Stonewood Home Lending and are subject to specific terms and conditions and may be limited to select homes and communities. For comprehensive terms, conditions, and further information regarding our homes and offerings, please consult with an Esperanza Homes sales consultant or visit esperanzahomes.com.



Jasmine



FIRST FLOOR



SECOND FLOOR