



**Available Now!**  
**\$268,990**  
From \$2,404.09\*/month

**901 S.Templo Dorado**  
Sendero at Bentsen Palm  
Homesite 57

Est. Completion Date: Available SEP/OCT 2025



**2,272**

TOTAL SQUARE FEET

**1,856**

LIVING SQUARE FEET

**3**

BEDROOMS

**2.5**

BATHS

**2**

CAR GARAGE

**2.0**

STORIES

Call or Text 956-275-8069 or visit our Sales Office Monday - Saturday: 9:30am to 6:30pm  
Sunday: 12pm to 6 pm for more info!

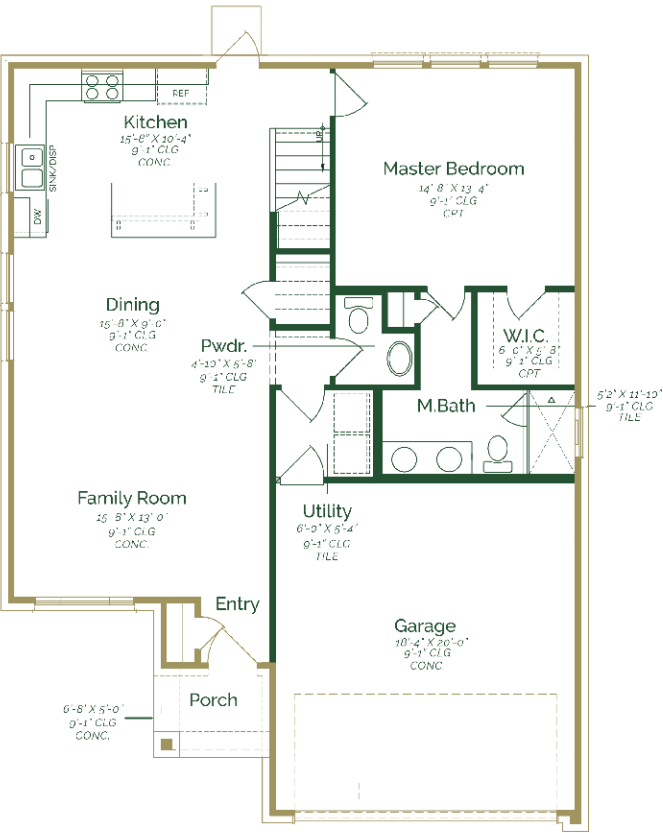
Welcome to a charming two-story home that effortlessly combines modern comfort with classic elegance. Upon entering the home, the open concept living space seamlessly blends the family room, dining, and kitchen. The kitchen is a chef's delight featuring stained maple wood stained cabinets, granite countertops, and GE stainless steel appliances. Conveniently tucked away on the main floor is a powder room, for both residents and guests. Upstairs, you'll discover a gameroom, two well-appointed bedrooms and a full bathroom.

- Maple Wood Cabinets
- Granite Countertops
- Upstairs Gameroom
- GE stainless steel appliances- Electric

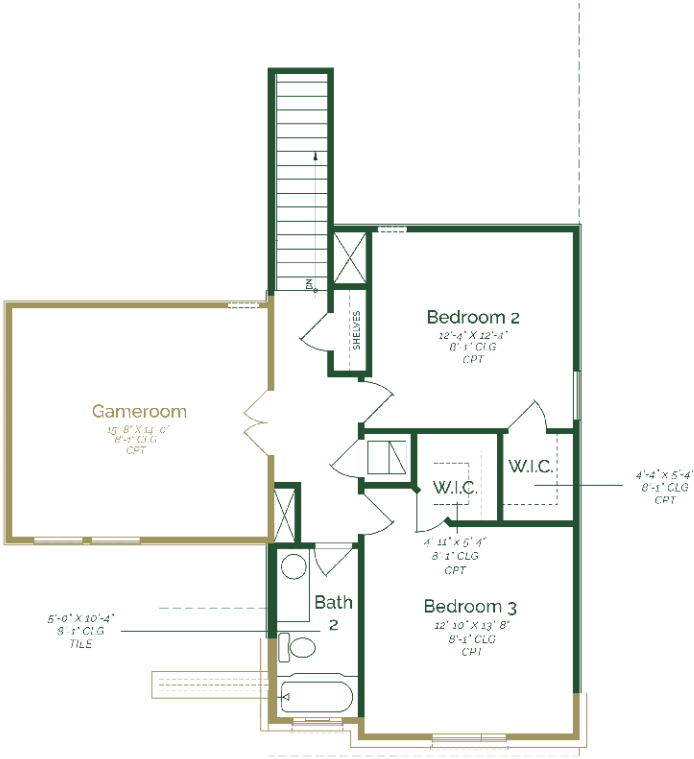
\*Photos do not represent the final production of the home

The information provided in this document regarding available quick move-in homes at Esperanza Homes is intended for informational purposes only. While we strive to present accurate and up-to-date information, all details—including but not limited to pricing, availability, home features, and community amenities—are not guaranteed and are subject to change without prior notice. Dimensions and floor plans are approximate and may differ from the actual homes. Incentives and promotional offers are valid only when financing through Stonewood Home Lending and are subject to specific terms and conditions and may be limited to select homes and communities. For comprehensive terms, conditions, and further information regarding our homes and offerings, please consult with an Esperanza Homes sales consultant or visit [esperanzahomes.com](http://esperanzahomes.com).





FIRST FLOOR



SECOND FLOOR