



Available Now!
\$350,990
From \$2,841.70*/month

3804 Heron Way
Retama Village (55+) at Bentsen Palm
Homesite 144

Est. Completion Date: Available now!



2,112

TOTAL SQUARE FEET

1,176

LIVING SQUARE FEET

2

BEDROOMS

2

BATHS

1.0

STORIES

Call or Text 956-275-8069 or visit our Sales Office Monday - Saturday: 9:30am to 6:30pm
Sunday: 12:00pm to 6:00pm for more info!

This beautiful home offers two bedrooms, two bathrooms, and an attached 50-foot RV port with hookups and courtyard access. The open-concept kitchen, dining, and living areas flow together seamlessly, with bonus French Doors leading to the courtyard. The kitchen features upgraded Quartz countertops, beautiful backsplash, Natural Tan painted Maple Wood cabinets, a luxury 5-piece GE appliance package, a walk-in pantry, and ample counter space. The spacious primary suite includes a walk-in closet and private bath, while the second bedroom is near a full bath, computer nook, and utility room.

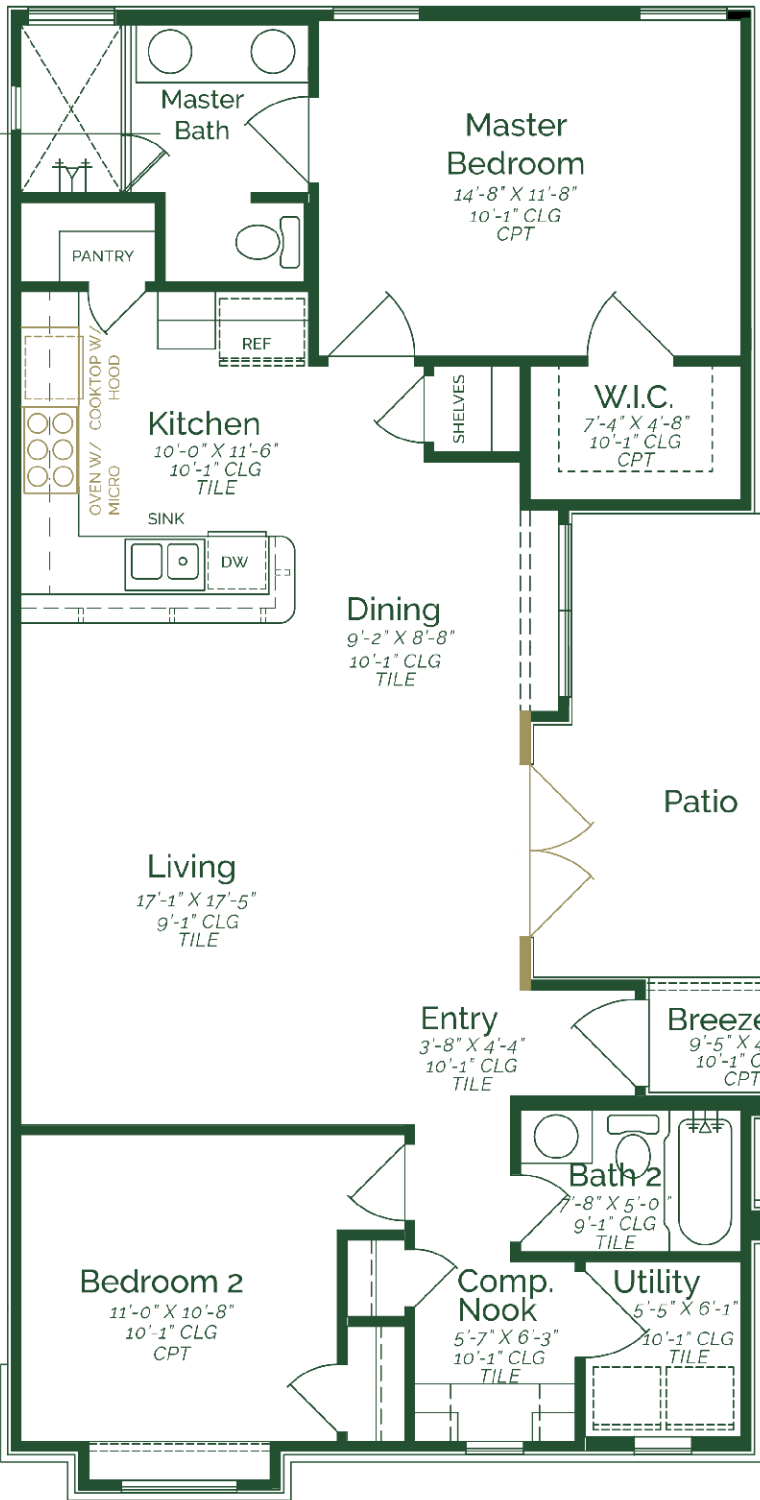
- Maple Wood cabinets
- Upgraded Quartz countertops
- Tile Flooring throughout home
- 5-Piece GE stainless steel appliances- Gas

*Photos do not represent the final production of the home

The information provided in this document regarding available quick move-in homes at Esperanza Homes is intended for informational purposes only. While we strive to present accurate and up-to-date information, all details—including but not limited to pricing, availability, home features, and community amenities—are not guaranteed and are subject to change without prior notice. Dimensions and floor plans are approximate and may differ from the actual homes. Incentives and promotional offers are valid only when financing through Stonewood Home Lending and are subject to specific terms and conditions and may be limited to select homes and communities. For comprehensive terms, conditions, and further information regarding our homes and offerings, please consult with an Esperanza Homes sales consultant or visit esperanzahomes.com.



10'-0" X 5'-10"
10'-1" CLG
TILE



Master Bath

Master Bedroom
14'-8" X 11'-8"
10'-1" CLG
CPT

PANTRY

REF

Kitchen
10'-0" X 11'-6"
10'-1" CLG
TILE

OVEN W/
MICRO

SINK

DW

SHELVES

W.I.C.
7'-4" X 4'-8"
10'-1" CLG
CPT

Dining
9'-2" X 8'-8"
10'-1" CLG
TILE

Patio

Living
17'-1" X 17'-5"
9'-1" CLG
TILE

Entry
3'-8" X 4'-4"
10'-1" CLG
TILE

Breezeway
9'-5" X 4'-0"
10'-1" CLG
CPT

Bath 2
7'-8" X 5'-0"
9'-1" CLG
TILE

Porch

Bedroom 2
11'-0" X 10'-8"
10'-1" CLG
CPT

Comp. Nook
5'-7" X 6'-3"
10'-1" CLG
TILE

Utility
5'-5" X 6'-1"
10'-1" CLG
TILE

RV Storage
17'-4" X 50'-0"
16'-1" CLG
CONC