



Available Now!
\$229,990
 From \$2,218.38*/month

2201 Tanager Lane
 Retama Village (55+) at Bentsen Palm
 Homesite 331

Est. Completion Date: Available now!



1,705	1,203	2	2	2	1.0
TOTAL SQUARE FEET	LIVING SQUARE FEET	BEDROOMS	BATHS	CAR GARAGE	STORIES

Call or Text 956-275-8069 or visit our Sales Office Monday - Saturday: 9:30am to 6:30pm
 Sunday: 12:00pm to 6:00pm for more info!

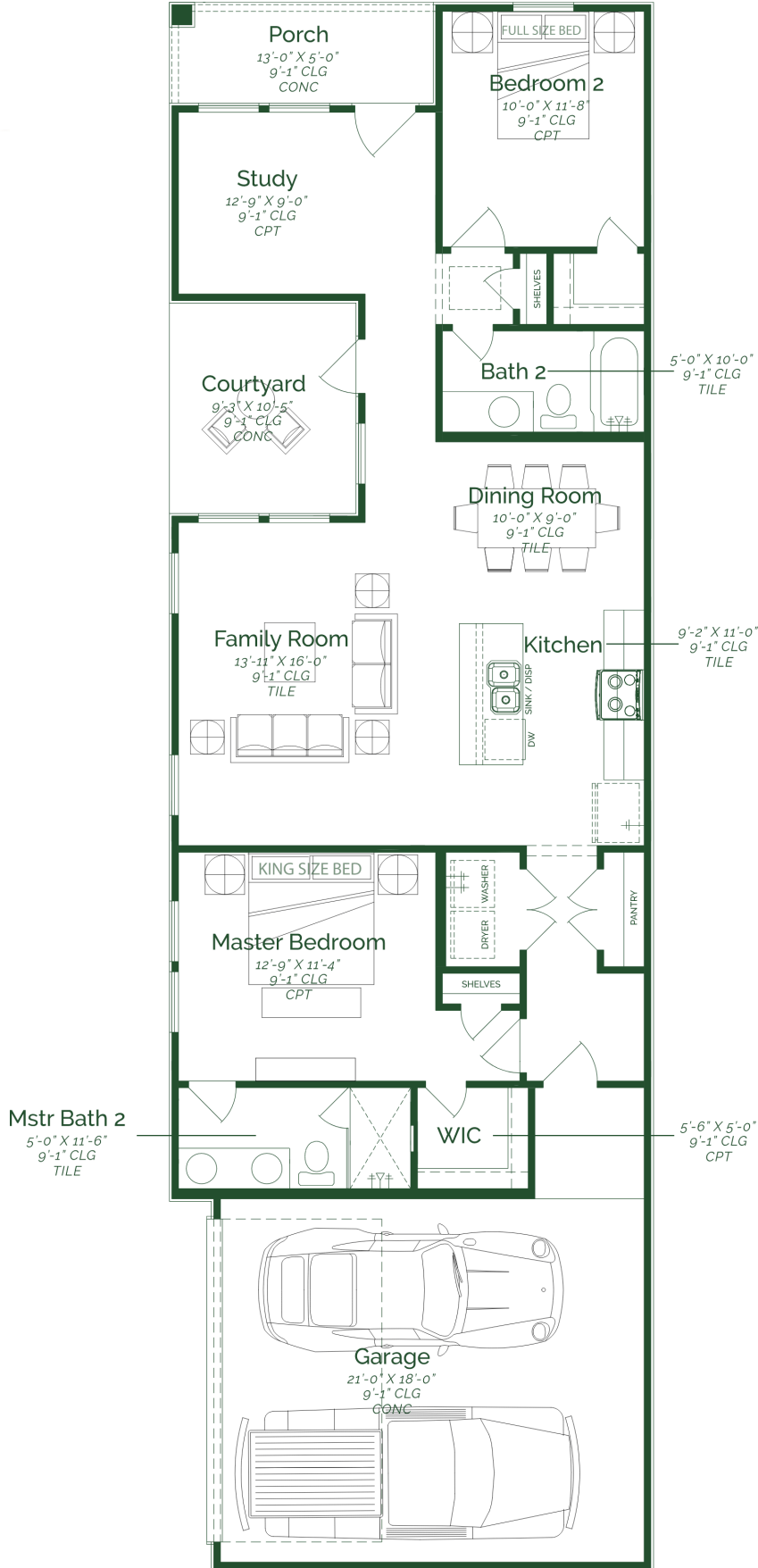
Discover this inviting single-story cottage designed for effortless everyday living. Its open-concept layout seamlessly connects the kitchen, dining area, family room, and a private courtyard, creating a bright and welcoming heart of the home. The primary suite features a spacious walk-in closet and a beautifully appointed bath with dual sinks and a walk-in shower. A second bedroom and full bathroom offer ideal comfort for guests or family. This home also features a study room, a back porch, and a two-car garage for added convenience.

- Maple Wood Painted Cabinets
- Upgraded Quartz Countertops
- Upgraded Wood Visual Tile Flooring throughout home
- 3-Piece GE Stainless Steel Appliances- Gas

The information provided in this document regarding available quick move-in homes at Esperanza Homes is intended for informational purposes only. While we strive to present accurate and up-to-date information, all details—including but not limited to pricing, availability, home features, and community amenities—are not guaranteed and are subject to change without prior notice. Dimensions and floor plans are approximate and may differ from the actual homes. Incentives and promotional offers are valid only when financing through Stonewood Home Lending and are subject to specific terms and conditions and may be limited to select homes and communities. For comprehensive terms, conditions, and further information regarding our homes and offerings, please consult with an Esperanza Homes sales consultant or visit esperanzahomes.com.



Cottage



FIRST FLOOR