



Available Now!
\$390,990
From \$3,463.9*/month

13806 Boykin Creek Rd
Cascada at Tres Lagos
Homesite 267

Est. Completion Date: Available SEP/OCT 2025



3,368

TOTAL SQUARE FEET

2,900

LIVING SQUARE FEET

5

BEDROOMS

3.5

BATHS

2

CAR GARAGE

2.0

STORIES

Call or Text 956-275-8069 or visit our Sales Office Monday - Saturday: 9:30am to 6:30pm
Sunday: 12pm to 6pm for more info!

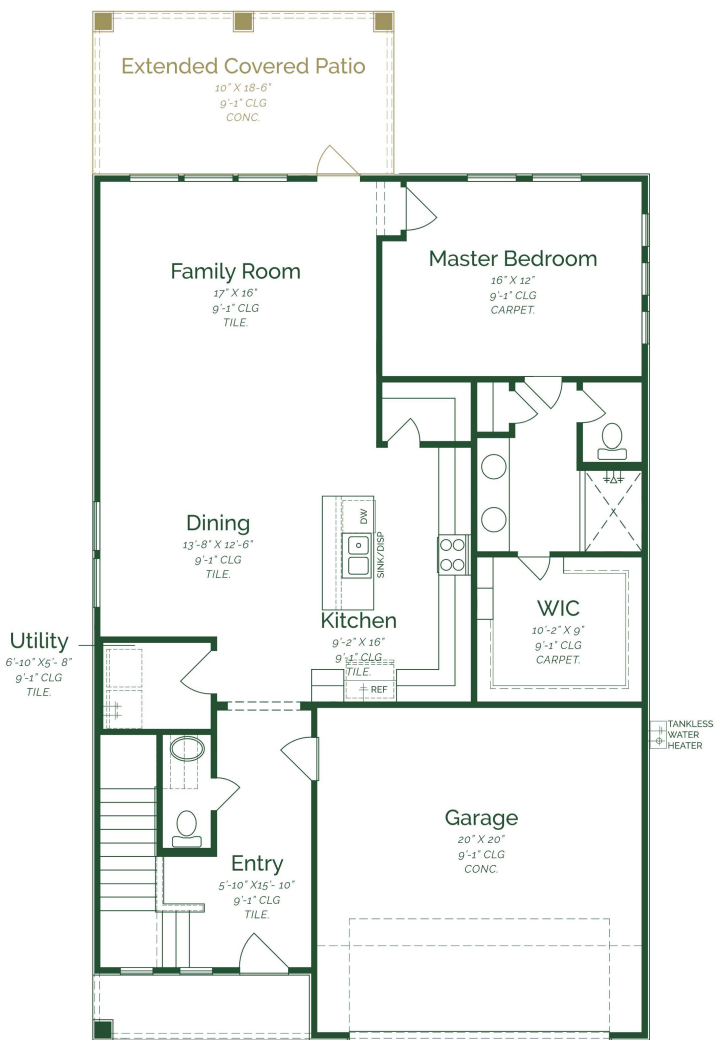
Upon entering this spacious home, you're greeted by an inviting open-concept dining, family room, and kitchen. The kitchen boasts Maple Wood Stained Cabinets, Quartz Countertops, and GE- Stainless-Steel appliances. Conveniently tucked away on the main floor is a powder room for both residents and guests. The primary bedroom offers a spacious layout, dual sinks, and a large walk-in closet. Upstairs, you'll discover four bedrooms, two full bathrooms, a study room, and a game room. In the backyard, enjoy an upgraded extended covered patio, perfect for relaxing or hosting guests.

- Bonus Extended Covered Patio
- Maple Wood Cabinets
- Quartz Countertops
- GE Stainless Steel Appliances- Gas

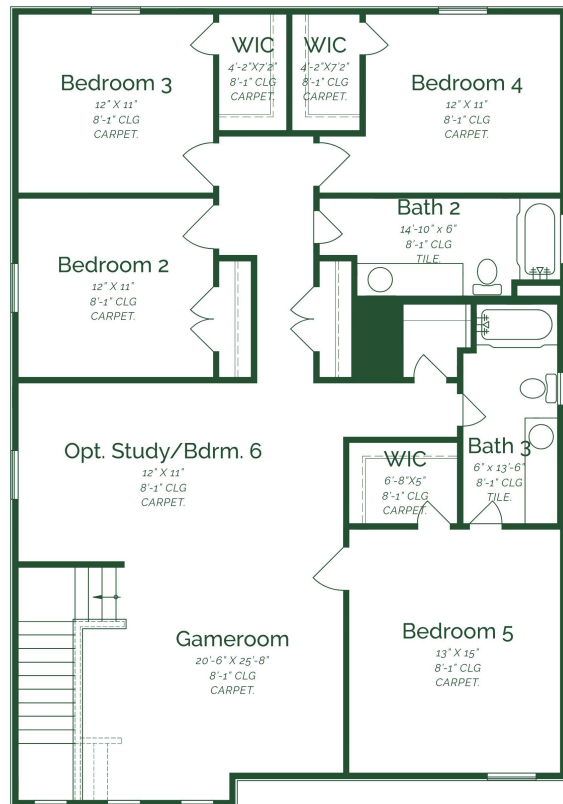
*Photos do not represent the final production of the home.

The information provided in this document regarding available quick move-in homes at Esperanza Homes is intended for informational purposes only. While we strive to present accurate and up-to-date information, all details—including but not limited to pricing, availability, home features, and community amenities—are not guaranteed and are subject to change without prior notice. Dimensions and floor plans are approximate and may differ from the actual homes. Incentives and promotional offers are valid only when financing through Stonewood Home Lending and are subject to specific terms and conditions and may be limited to select homes and communities. For comprehensive terms, conditions, and further information regarding our homes and offerings, please consult with an Esperanza Homes sales consultant or visit esperanzahomes.com.





FIRST FLOOR



SECOND FLOOR