



Available Now!
\$566,990
 From \$4,987.88*/month

7012 Cypress Springs Dr.
 Aqualina at Tres Lagos
 Homesite 128

Est. Completion Date: Available JUL/AUG 2026



4,239

TOTAL SQUARE FEET

3,552

LIVING SQUARE FEET

5

BEDROOMS

3.5

BATHS

2

CAR GARAGE

2.0

STORIES

Call or Text 956-275-8069 or visit our Sales Office Monday - Saturday: 9:30am to 6:30pm
 Sunday: 12pm to 6pm for more info!

Stunning two-story home featuring 5 bedrooms, 3.5 bathrooms, and a 2-car garage on a spacious 12,759 sq. ft. lot with a northwest-facing orientation. The open-concept layout seamlessly connects the kitchen, living, and dining areas, complemented by a cozy breakfast nook for casual meals. Additional spaces include a private study and a game room, perfect for work, learning, or entertainment. Step outside to the extended covered patio, ideal for outdoor gatherings and relaxing evenings. Designed for comfort, functionality, and modern living, this home offers everything a family could desire.

Highlights:

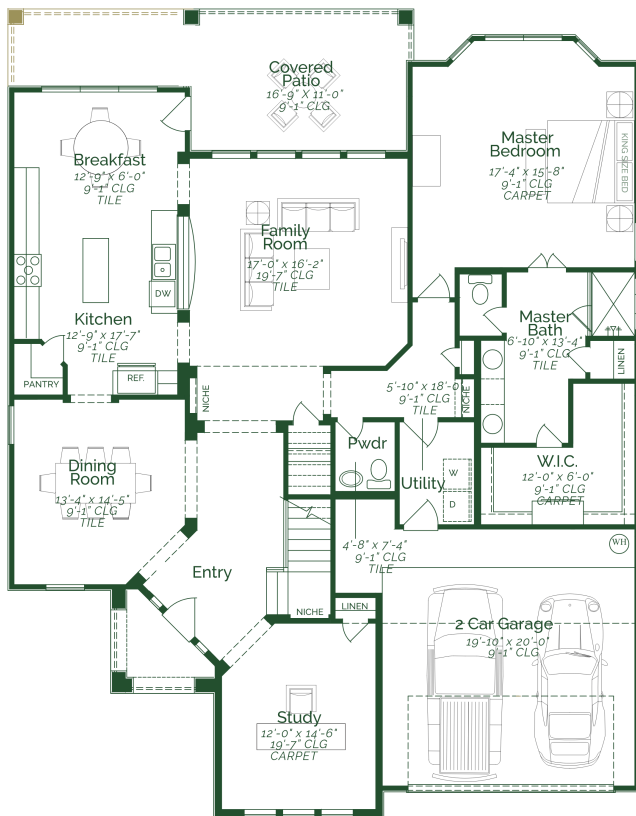
- 12,759 sq ft lot
- Study Room
- Extended Covered Patio
- Maple Wood Painted Cabinets
- Quartz Countertops

The information provided in this document regarding available quick move-in homes at Esperanza Homes is intended for informational purposes only. While we strive to present accurate and up-to-date information, all details—including but not limited to pricing, availability, home features, and community amenities—are not guaranteed and are subject to change without prior notice. Dimensions and floor plans are approximate and may differ from the actual homes. Incentives and promotional offers are valid only when financing through Stonewood Home Lending and are subject to specific terms and conditions and may be limited to select homes and communities. For comprehensive terms, conditions, and further information regarding our homes and offerings, please consult with an Esperanza Homes sales consultant or visit esperanzahomes.com.

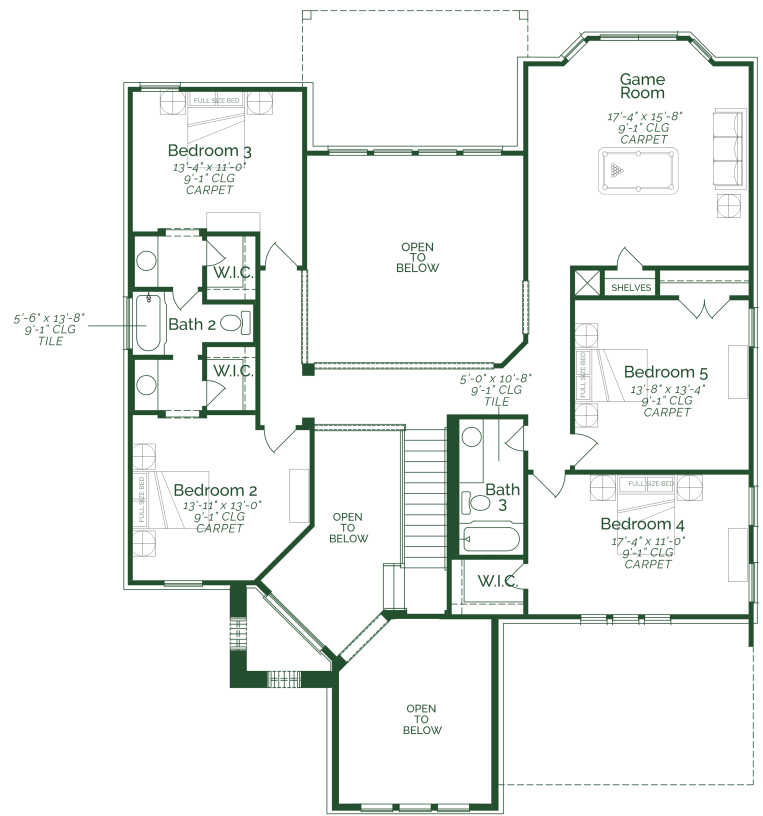


San Saba

FLOOR PLAN



FIRST FLOOR



SECOND FLOOR