



Available Now!
\$218,990
From \$1,865.30*/month

5716 St Dominic Dr
Wolf Creek
Homesite 35

Est. Completion Date: Available FEB/MAR 2026



1,516

TOTAL SQUARE FEET

1,449

LIVING SQUARE FEET

4

BEDROOMS

2

BATHS

1.0

STORIES

Call or Text 956-275-8069 or visit our Sales Office Monday - Saturday: 9:30am to 6:30pm Sunday: 12pm to 6pm for more info!

This well-appointed home features 4 bedrooms and 2 bathrooms with a thoughtfully designed open layout. The kitchen is equipped with Arctic White quartz countertops, tile flooring, a convenient pull-out trash cabinet, and a 3-piece stainless steel electric appliance package. Stylish finishes continue throughout the home, while the master bathroom showcases a sleek frameless shower door for a modern, spa-like feel. With quality materials and functional details throughout, this home blends comfort, efficiency, and contemporary design.

Highlights:

- Quartz Countertops
- Tile Flooring
- GE - 3 Piece Appliance Package - Stainless Steel - Electric

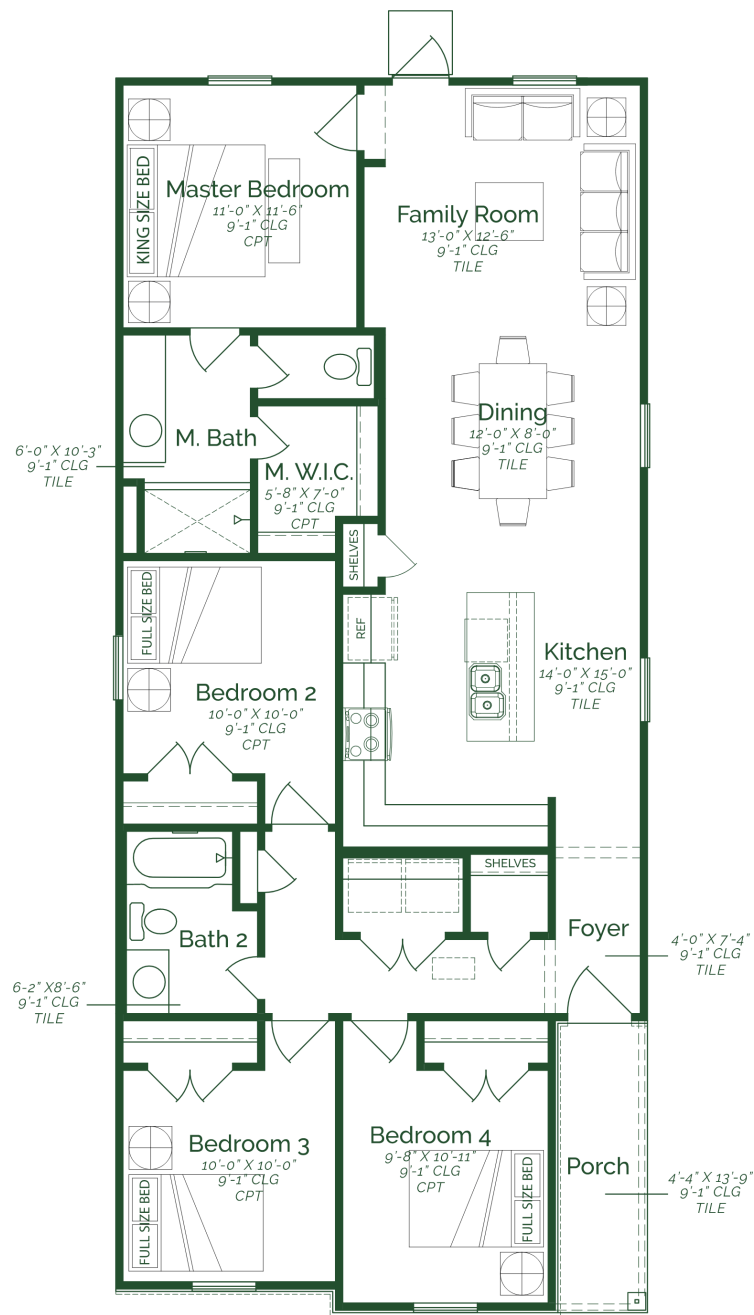
****Photos do not represent final production of home.**

The information provided in this document regarding available quick move-in homes at Esperanza Homes is intended for informational purposes only. While we strive to present accurate and up-to-date information, all details—including but not limited to pricing, availability, home features, and community amenities—are not guaranteed and are subject to change without prior notice. Dimensions and floor plans are approximate and may differ from the actual homes. Incentives and promotional offers are valid only when financing through Stonewood Home Lending and are subject to specific terms and conditions and may be limited to select homes and communities. For comprehensive terms, conditions, and further information regarding our homes and offerings, please consult with an Esperanza Homes sales consultant or visit esperanzahomes.com.



Chacon

FLOOR PLAN



FIRST FLOOR