



**Available Now!**  
**\$215,990**  
 From \$1,841.29\*/month

**5421 St. Leo Dr.**  
 Wolf Creek  
 Homesite 304

**Est. Completion Date: Available JUL/AUG 2026**



<b>1,275</b>	<b>1,248</b>	<b>3</b>	<b>2</b>	<b>1.0</b>
TOTAL SQUARE FEET	LIVING SQUARE FEET	BEDROOMS	BATHS	STORIES

Call or Text 956-275-8069 or visit our Sales Office Monday - Saturday: 9:30am to 6:30pm Sunday: 12pm to 6pm for more info!

Step into this beautifully designed new construction home featuring 3 bedrooms and 2 bathrooms. The open-concept layout creates a bright and inviting space, seamlessly connecting the living, dining, and kitchen areas—ideal for everyday living and entertaining. The kitchen is equipped with modern quartz countertops, offering both style and durability. Each bedroom is thoughtfully designed for comfort, and the primary suite provides a relaxing retreat. With contemporary finishes throughout and no garage, this home offers a low-maintenance lifestyle with a clean, modern feel.

**Highlights:**

- New Construction
- Quartz Countertops
- Tuscan Brick Elevation

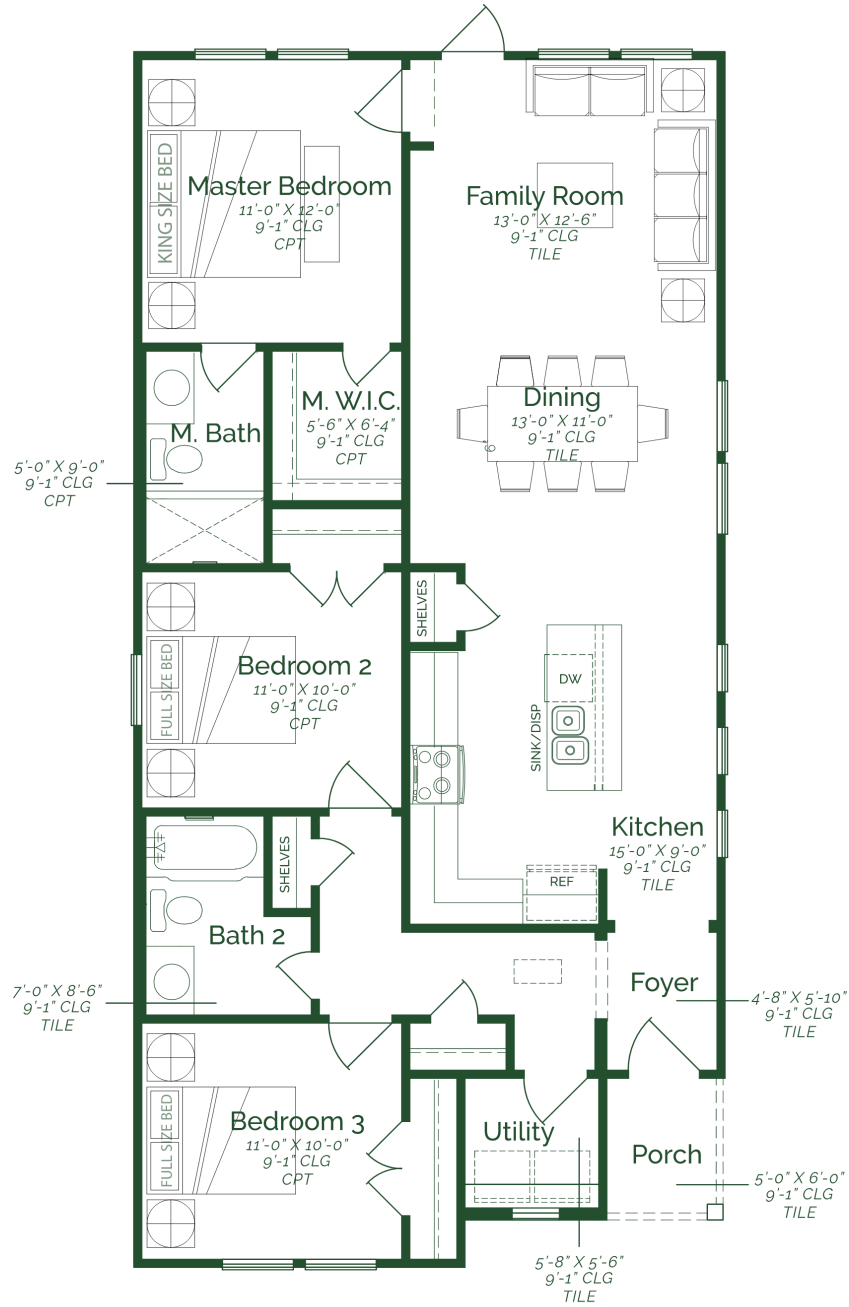
**\*\*Photos do not represent final production of home.**

The information provided in this document regarding available quick move-in homes at Esperanza Homes is intended for informational purposes only. While we strive to present accurate and up-to-date information, all details—including but not limited to pricing, availability, home features, and community amenities—are not guaranteed and are subject to change without prior notice. Dimensions and floor plans are approximate and may differ from the actual homes. Incentives and promotional offers are valid only when financing through Stonewood Home Lending and are subject to specific terms and conditions and may be limited to select homes and communities. For comprehensive terms, conditions, and further information regarding our homes and offerings, please consult with an Esperanza Homes sales consultant or visit [esperanzahomes.com](http://esperanzahomes.com).



# Bear

## FLOOR PLAN



FIRST FLOOR