



Available Now!  
\$338,990  
From \$2,820.49\*/month

2414 Nilgai Trail  
Palo Alto Groves  
Homesite 299

Est. Completion Date: Available APR/MAY 2026



2,785

TOTAL SQUARE FEET

2,328

LIVING SQUARE FEET

4

BEDROOMS

3

BATHS

2

CAR GARAGE

2.0

STORIES

Call or Text 956-275-8069 or visit our Sales Office for more info!

This spacious two-story Juniper home offers 4 bedrooms and 3 bathrooms, designed to give your family room to grow and entertain. The main level features an open-concept layout. Inside, the kitchen stands out with Maple Wood pure white painted cabinets, stunning frost white Quartz countertops, and a luxurious GE 5-Piece Gas Appliance Package. This kitchen features an island, perfect for everyday cooking or hosting. Elegant tile flooring flows throughout the home, adding both style and durability. Additional features of the home include an upstairs game room, utility room, a walk-in pantry, and an attached two-car garage.

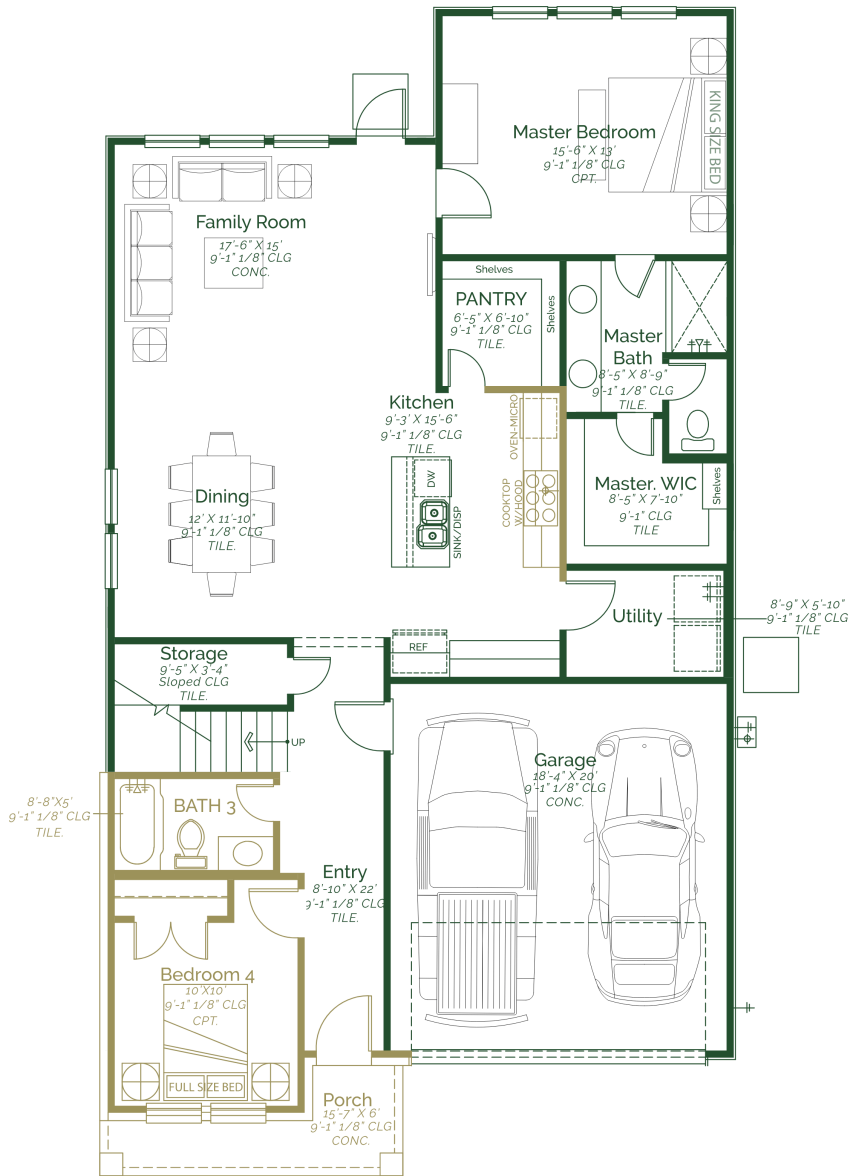
- Upstairs Gameroom
- Bonus Bedroom 4 and Bath 3
- Quartz Countertops
- GE 5-Piece Stainless-Steel Appliances - Gas

\*Photos do not represent the final production of the home

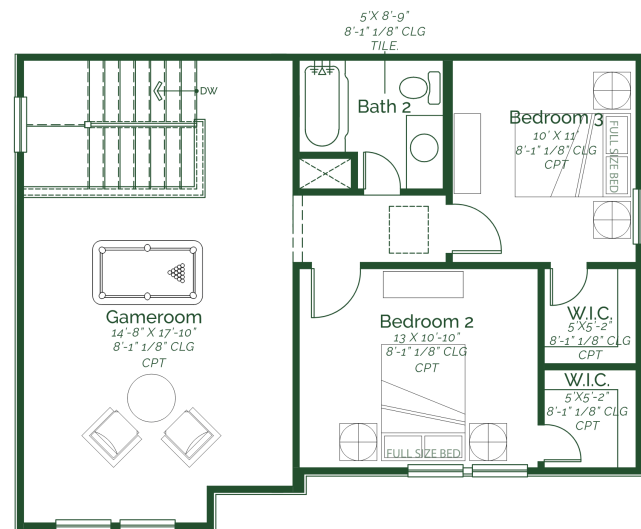
The information provided in this document regarding available quick move-in homes at Esperanza Homes is intended for informational purposes only. While we strive to present accurate and up-to-date information, all details—including but not limited to pricing, availability, home features, and community amenities—are not guaranteed and are subject to change without prior notice. Dimensions and floor plans are approximate and may differ from the actual homes. Incentives and promotional offers are valid only when financing through Stonewood Home Lending and are subject to specific terms and conditions and may be limited to select homes and communities. For comprehensive terms, conditions, and further information regarding our homes and offerings, please consult with an Esperanza Homes sales consultant or visit [esperanzahomes.com](http://esperanzahomes.com).



# Juniper



FIRST FLOOR



SECOND FLOOR