



Available Now!

\$289,990

From \$2,497.61*/month

2261 Grove Lane

Palo Alto Groves

Homesite 355

Est. Completion Date: Available OCT/NOV 2025



2,180

TOTAL SQUARE FEET

1,784

LIVING SQUARE FEET

3

BEDROOMS

2.5

BATHS

2

CAR GARAGE

2.0

STORIES

Call or Text 956-275-8069 or visit our Sales Office for more info!

Welcome to this beautifully designed home offering three spacious bedrooms, two full bathrooms, and a powder room. The open-concept layout creates a seamless flow from the living room to the kitchen and dining area, perfect for both everyday living and entertaining. The kitchen features Heirloom Oak ash wood stained cabinets Frost White, upgraded Granite countertops, and a GE- 3 Piece Stainless-Steel appliance package. The primary bedroom includes an en-suite bathroom and a walk-in closet. Upstairs, you'll find a versatile gameroom, two bedrooms, and a shared full bath. For added convenience, the home includes a utility room and a two-car garage.

- Tile Flooring throughout home
- Ash Wood Stained Cabinets
- Upgraded Granite Countertops
- GE Stainless Steel Appliances- Gas

***Photos do not represent the final production of the home.**

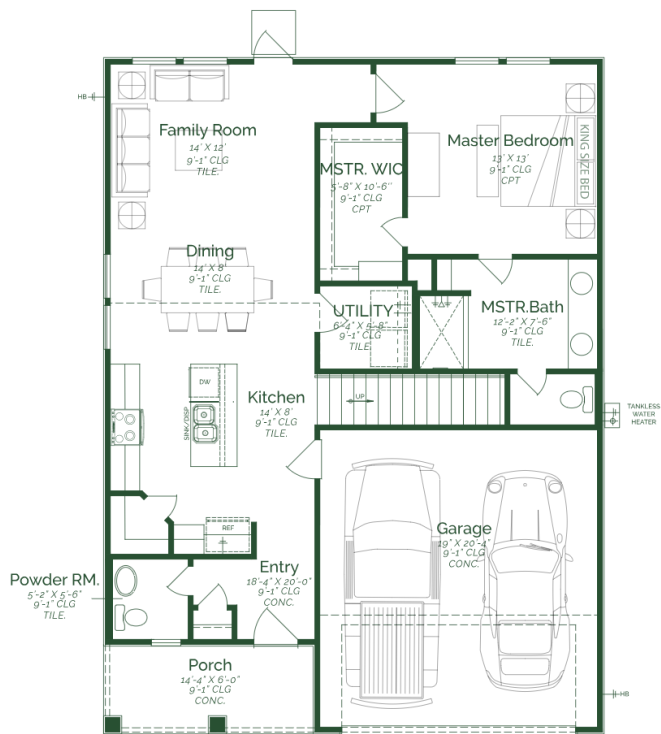
The information provided in this document regarding available quick move-in homes at Esperanza Homes is intended for informational purposes only. While we strive to present accurate and up-to-date information, all details—including but not limited to pricing, availability, home features, and community amenities—are not guaranteed and are subject to change without prior notice. Dimensions and floor plans are approximate and may differ from the actual homes. Incentives and promotional offers are valid only when financing through Stonewood Home Lending and are subject to specific terms and conditions and may be limited to select homes and communities. For comprehensive terms, conditions, and further information regarding our homes and offerings, please consult with an Esperanza Homes sales consultant or visit esperanzahomes.com.



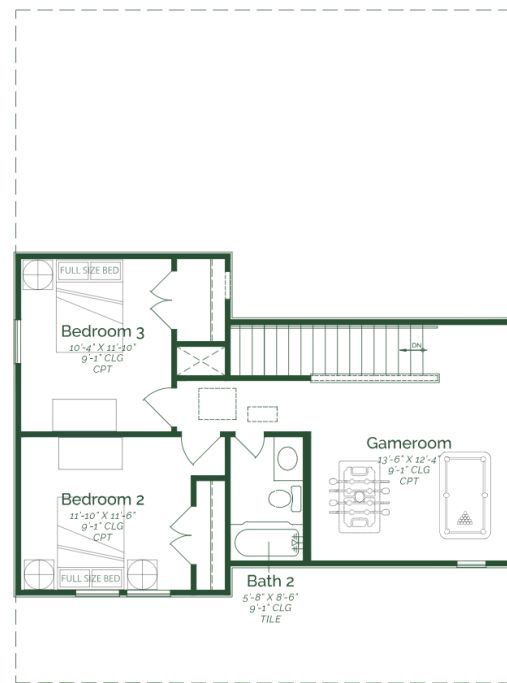
Jasmine

1,784 SF | 3 BR | 2.5BA

FLOOR PLAN



FIRST FLOOR



SECOND FLOOR