



**Available Now!**  
**\$312,990**  
From \$2,772.08\*/month

**2240 Grove Lane**  
Palo Alto Groves  
Homesite 218

Est. Completion Date: Available now!



**2,272**

TOTAL SQUARE FEET

**1,856**

LIVING SQUARE FEET

**3**

BEDROOMS

**2.5**

BATHS

**2**

CAR GARAGE

**2.0**

STORIES

Call or Text 956-275-8069 or visit our Sales Office for more info!

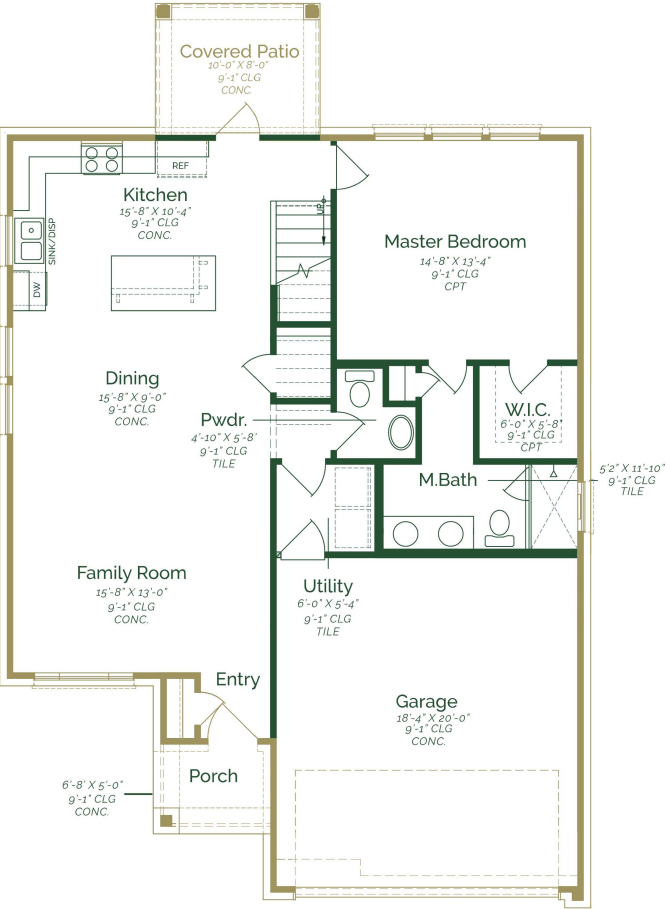
Welcome to this charming two-story home that effortlessly combines modern comfort with classic elegance. Upon entering the home, the open concept living space connects the family room, dining, and kitchen. The kitchen is a chef's delight boasting ash wood stained cabinets, granite countertops, and a GE 3-piece appliance package. Conveniently tucked away on the main floor is a powder room, for both residents and guests. Upstairs, you'll discover a gameroom, two well-appointed bedrooms, and shared full bathroom. In the backyard, enjoy a bonus covered patio for relaxation or hosting guests.

- Upstairs Gameroom
- Ash Wood Cabinets
- Granite Countertops
- Bonus Covered Patio

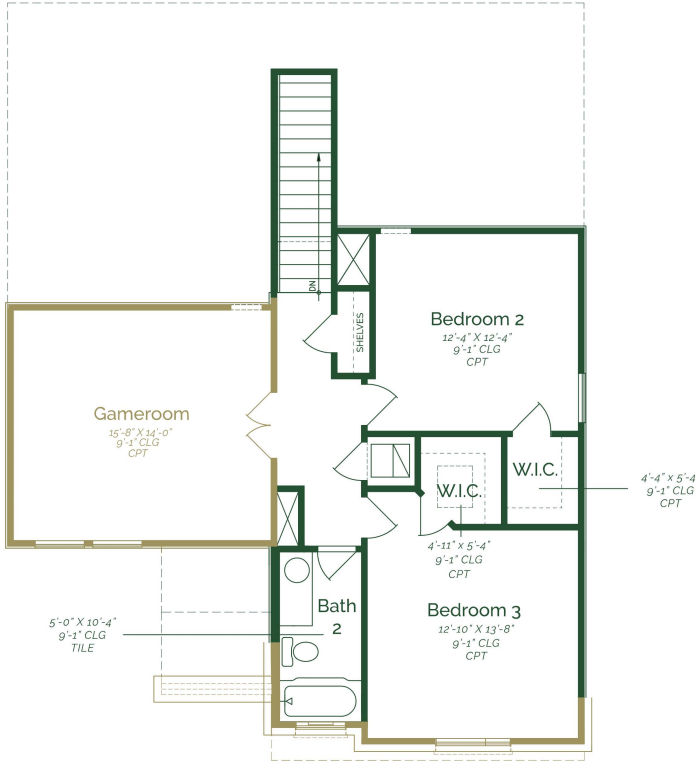
\*Photos do not represent the final production of the home.

The information provided in this document regarding available quick move-in homes at Esperanza Homes is intended for informational purposes only. While we strive to present accurate and up-to-date information, all details—including but not limited to pricing, availability, home features, and community amenities—are not guaranteed and are subject to change without prior notice. Dimensions and floor plans are approximate and may differ from the actual homes. Incentives and promotional offers are valid only when financing through Stonewood Home Lending and are subject to specific terms and conditions and may be limited to select homes and communities. For comprehensive terms, conditions, and further information regarding our homes and offerings, please consult with an Esperanza Homes sales consultant or visit [esperanzahomes.com](http://esperanzahomes.com).





FIRST FLOOR



SECOND FLOOR