



Available Now!
\$335,990
From \$2,795.79*/month

2156 Sand Lane
Palo Alto Groves
Homesite 241

Est. Completion Date: Available APR/MAY 2026



2,642

TOTAL SQUARE FEET

2,200

LIVING SQUARE FEET

4

BEDROOMS

3

BATHS

2

CAR GARAGE

2.0

STORIES

Call or Text 956-275-8069 or visit our Sales Office for more info!

This spacious two-story Juniper home offers 4 bedrooms and 3 bathrooms, designed to give your family room to grow and entertain. The main level features an open-concept layout with a beautiful kitchen that stands out with Maple Wood Pure White painted cabinets, upgraded Quartz countertops, and a stunning GE 3-Piece Stainless-Steel Gas Appliance Package. Elegant tile flooring flows throughout the home, adding both style and durability. Upstairs, you'll find a versatile game room, two bedrooms with a walk-in closet, and a full bathroom. Additional features of the home include a utility room, a walk-in pantry, and an attached two-car garage.

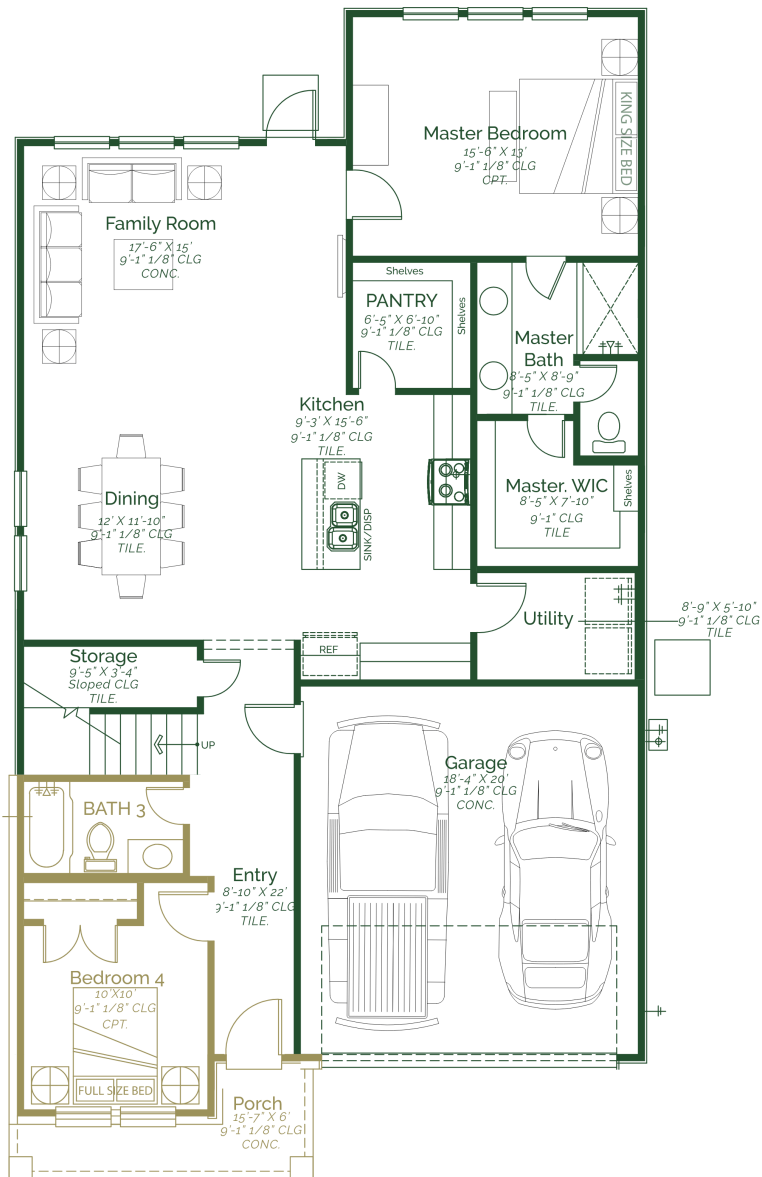
- Bonus Bedroom 4 and Bath 3
- Quartz Countertops
- Tile Flooring throughout Home
- GE 3-Piece Stainless-Steel Appliances - Gas

***Photos do not represent the final production of the home**

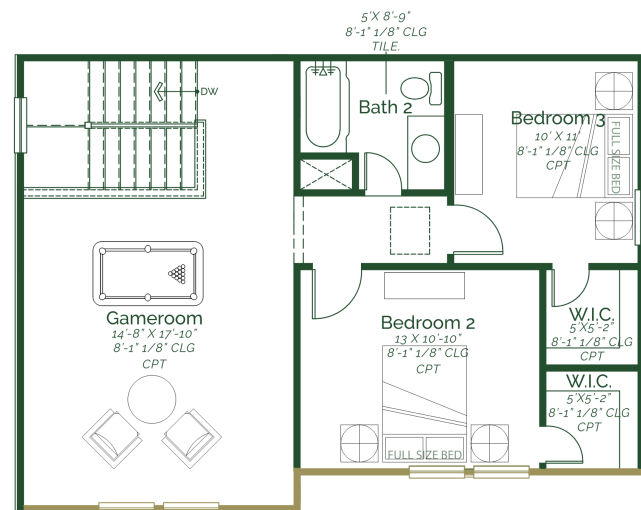
The information provided in this document regarding available quick move-in homes at Esperanza Homes is intended for informational purposes only. While we strive to present accurate and up-to-date information, all details—including but not limited to pricing, availability, home features, and community amenities—are not guaranteed and are subject to change without prior notice. Dimensions and floor plans are approximate and may differ from the actual homes. Incentives and promotional offers are valid only when financing through Stonewood Home Lending and are subject to specific terms and conditions and may be limited to select homes and communities. For comprehensive terms, conditions, and further information regarding our homes and offerings, please consult with an Esperanza Homes sales consultant or visit esperanzahomes.com.



Juniper



FIRST FLOOR



SECOND FLOOR